

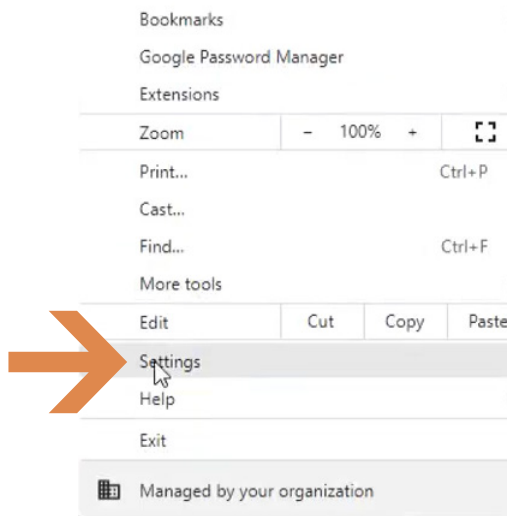


## ➔ HOW DO I: SET MY GOOGLE CHROME BROWSER SETTINGS – SBS FOR ORGANIZATIONS?

Using the recommended browser settings with SBS will greatly improve the user experience. The two browsers most commonly used by SBS users are Google Chrome and Microsoft Edge.

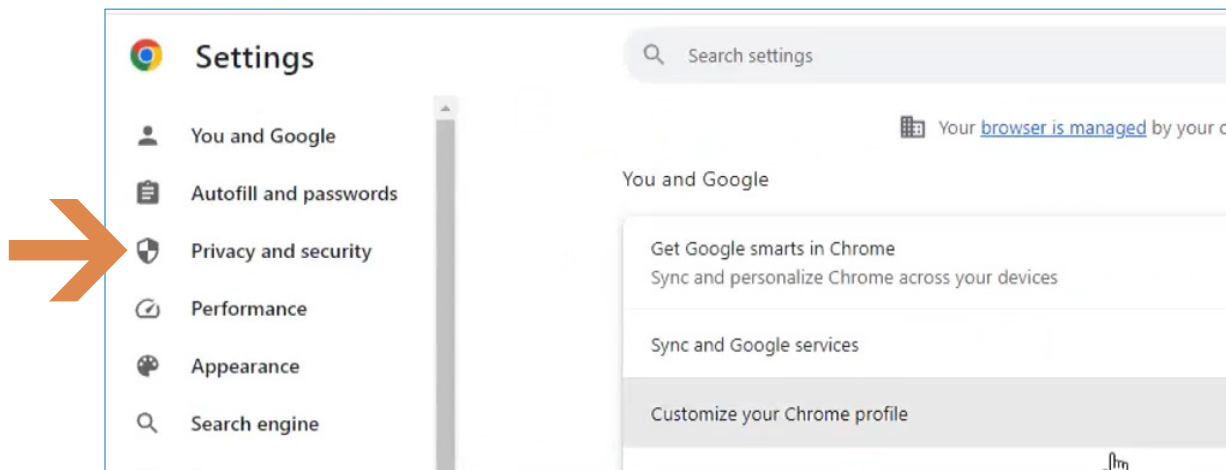
### 1 Google Chrome Browser Settings

From the Google Chrome tab, select Settings.



### 2 Select Privacy

Under the Setting sidebar, select Privacy and security.

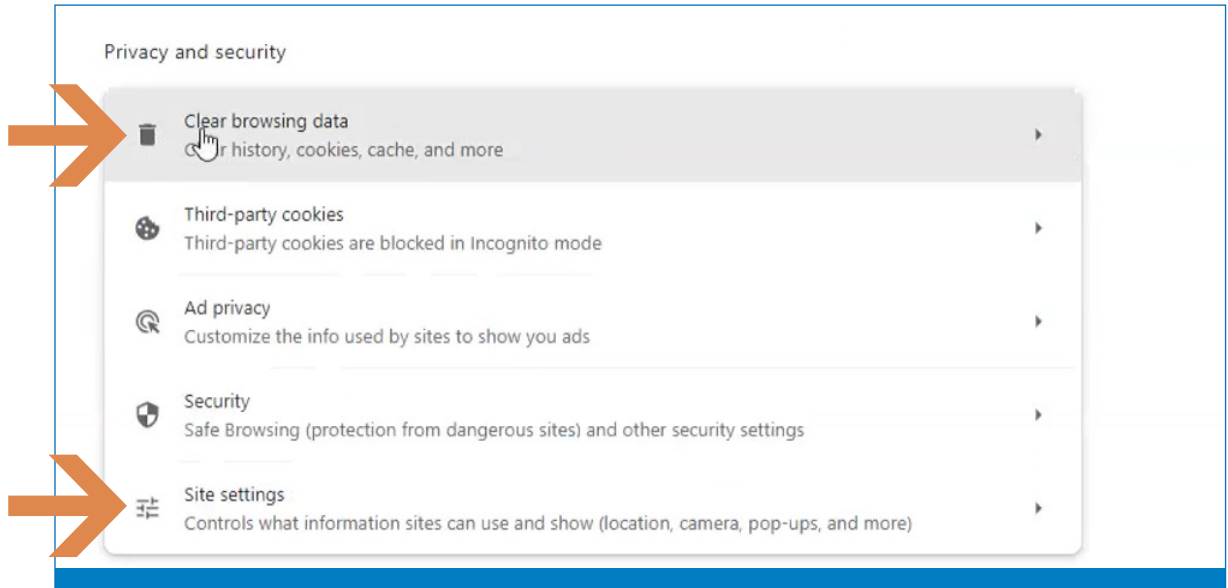


➔ NEED HELP? CONTACT THE SBS HELP DESK • [SBSHELP@NAIC.ORG](mailto:SBSHELP@NAIC.ORG) • 816-783-8990



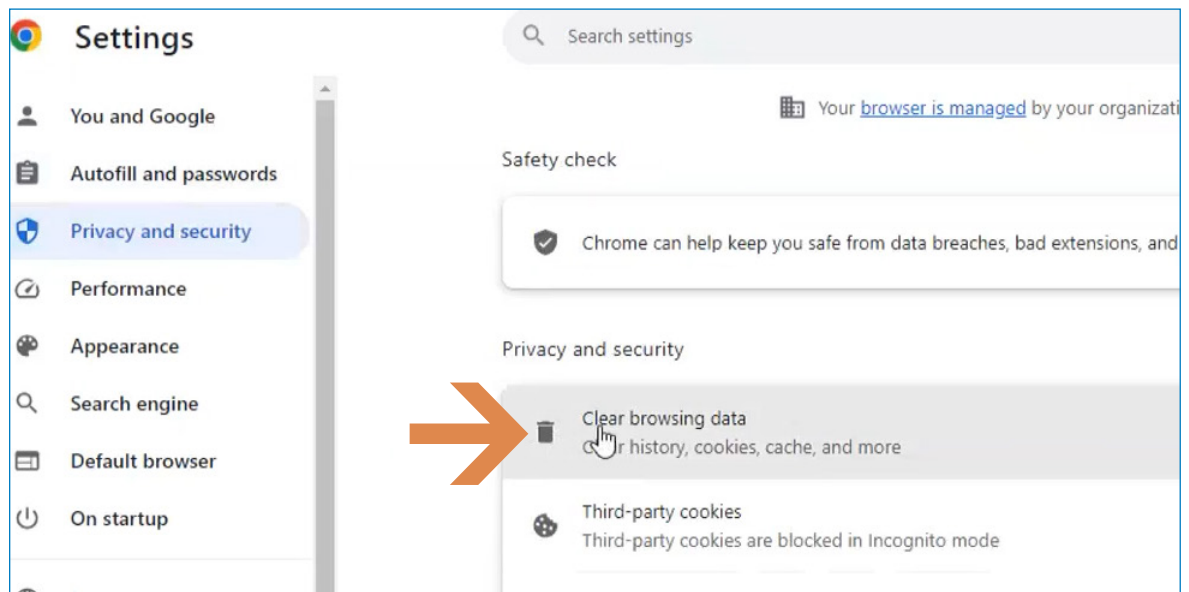
### 3 Google Chrome recommended browser settings

The Privacy and security section allows access to both areas of recommendations: Clear browsing data and Site Settings (which contains settings for pop-ups).



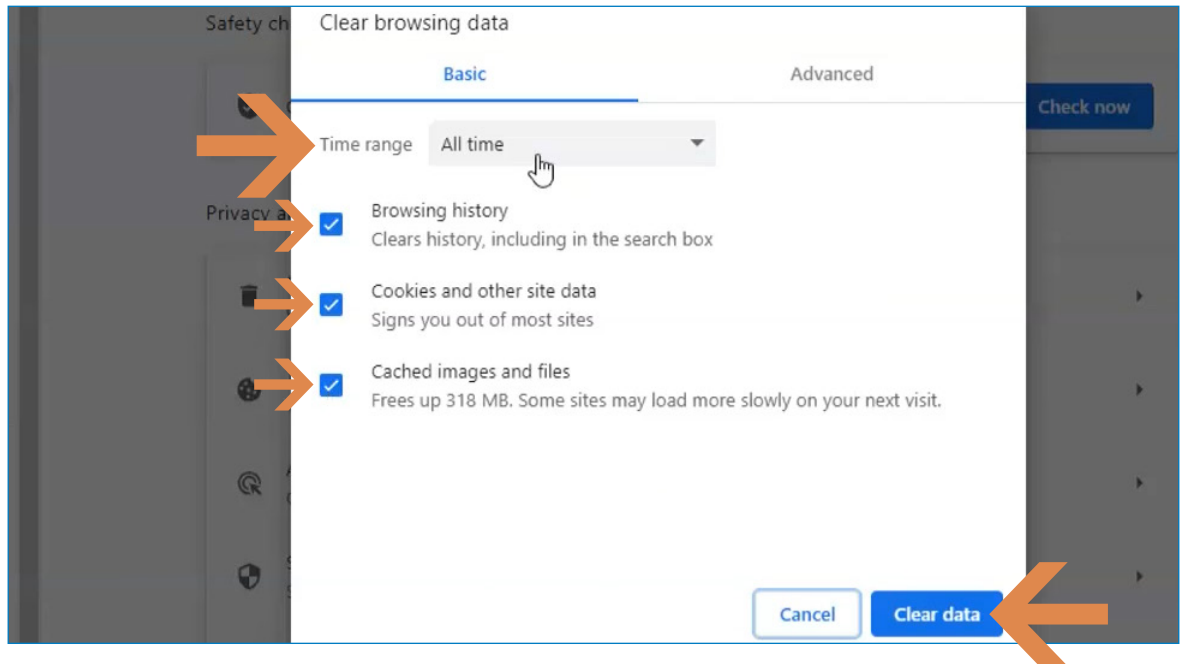
### 4 Clear Browsing data

Click on Clear browsing data.



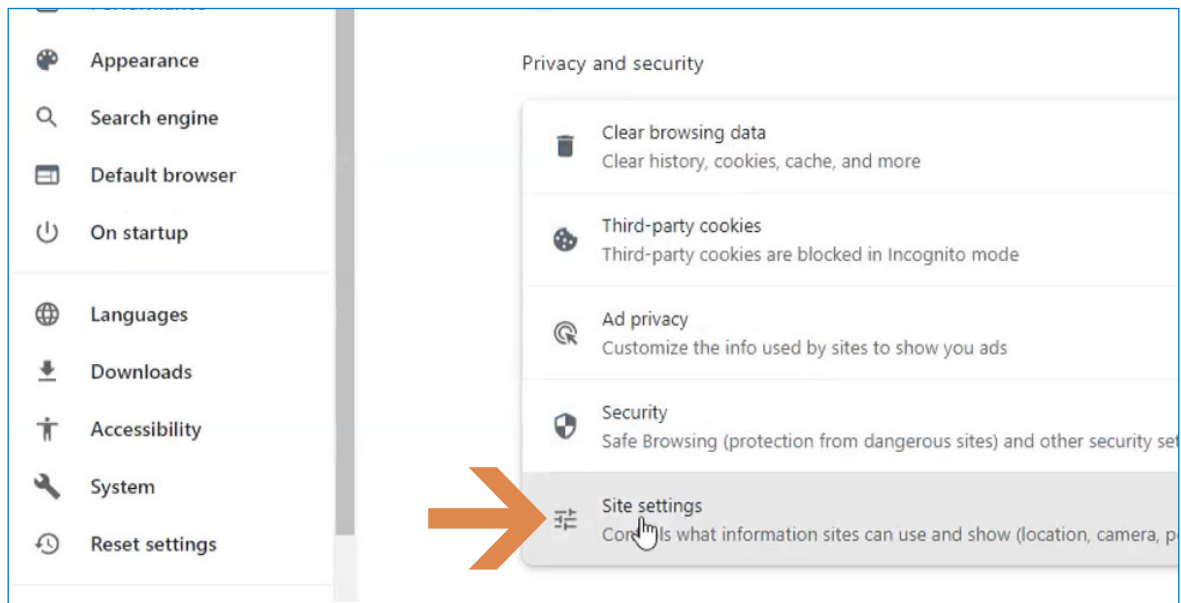
### 5 Select options

A window will open to allow options for Clear browsing data. Select all three of the options offered as shown below. Select All time in the time range field. This allows all data to load properly each time. Select Clear data.



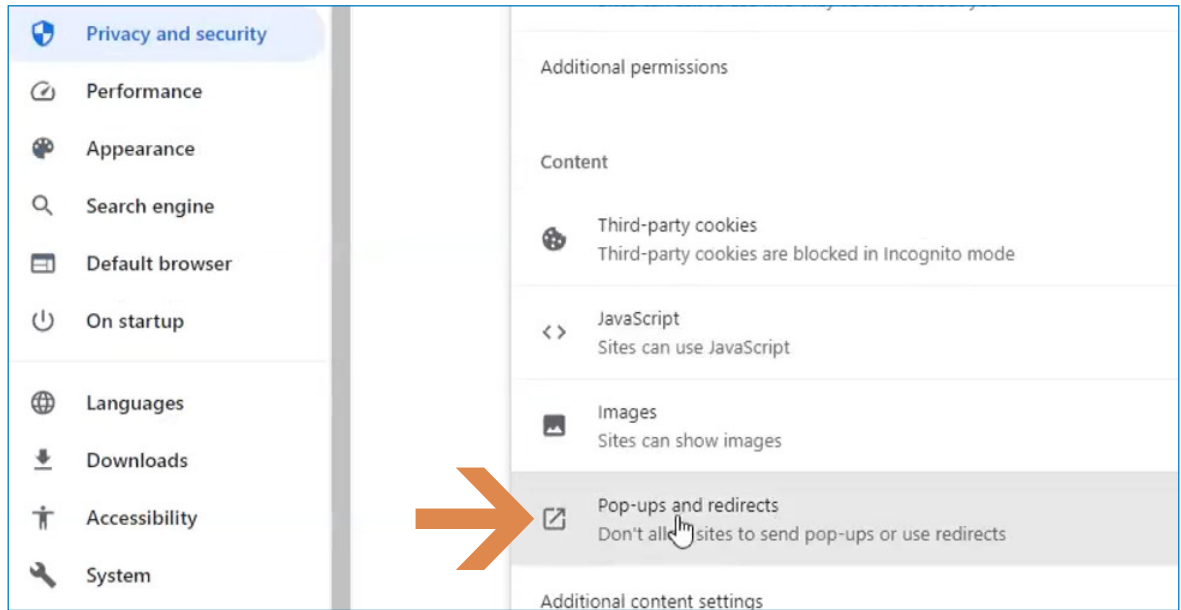
### 6 Site Settings

Settings for pop-ups are in the Site settings field under Privacy and Security. Select this field.



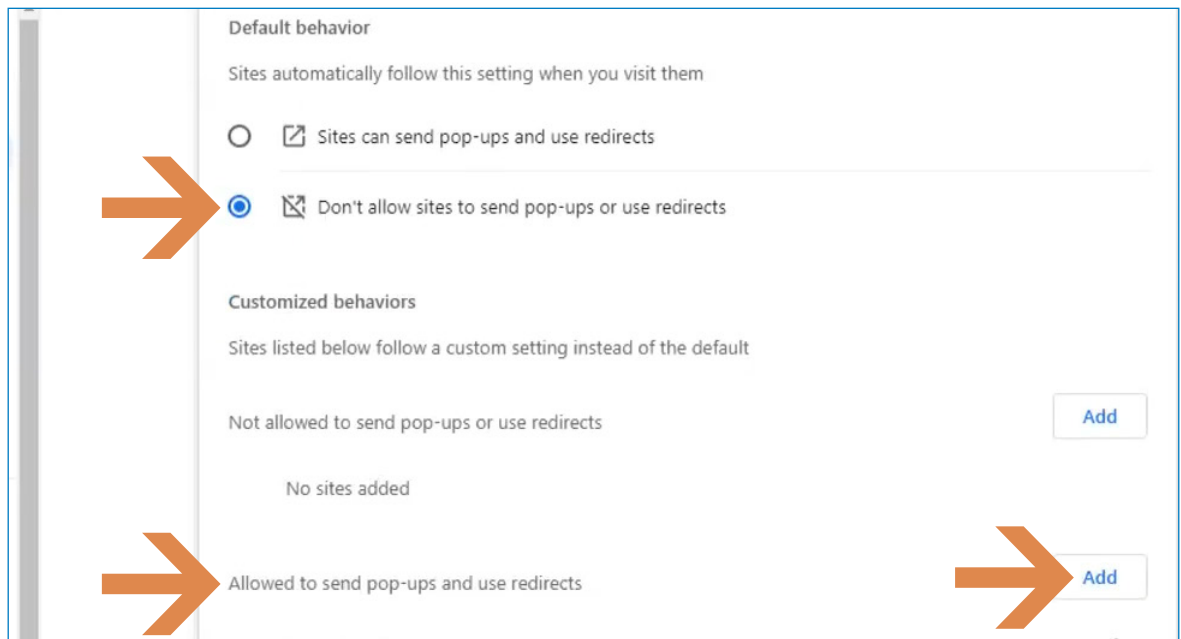
### 7 Pop-ups and redirects

Scroll down to Pop-ups and redirects and select this field.



### 8 Pop-up behavior

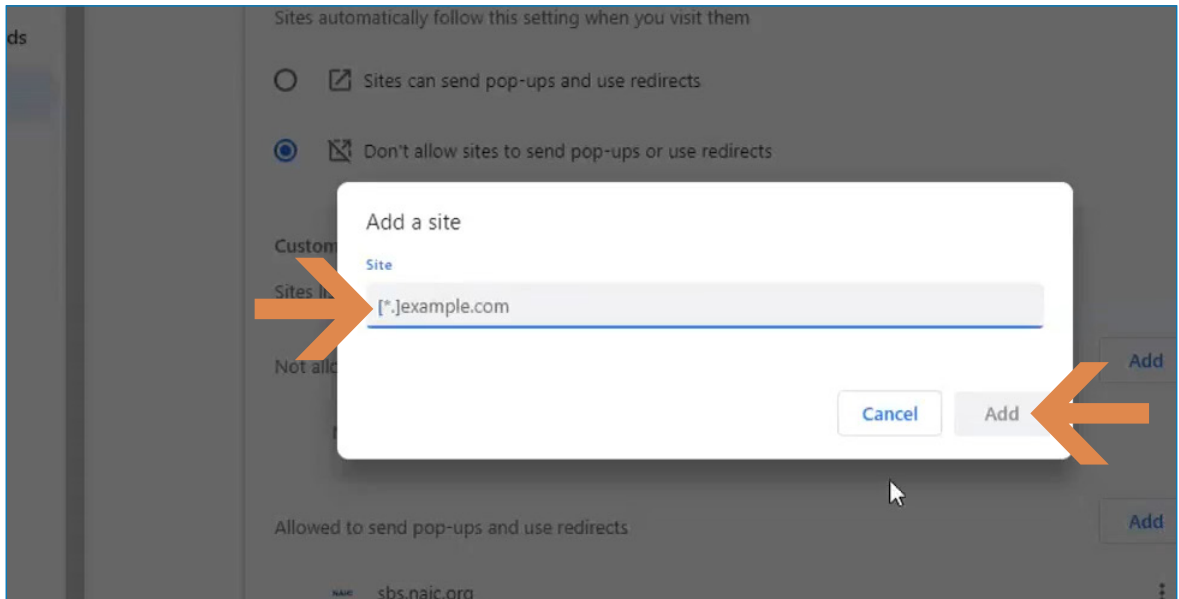
Under Default behavior, choose the preferred setting for Pop-ups. You may deny general Pop-ups but allow them on SBS sites. It is necessary to allow pop-ups on SBS sites for the sites to perform as designed. Under Allowed to send pop-ups and use redirects, click the Add button.



➔ [SBSHELP@NAIC.ORG](mailto:SBSHELP@NAIC.ORG) • 816-783-8990

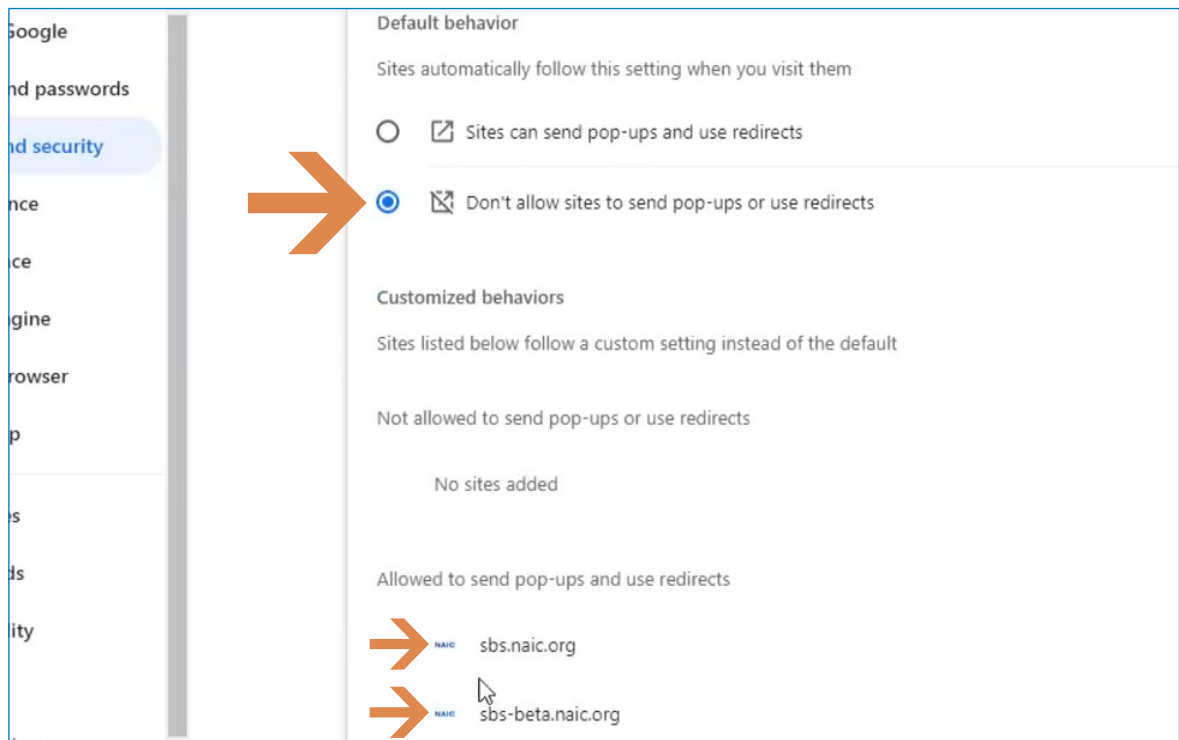
### 9 Add SBS sites

An Add a site box will open. Enter the SBS urls, [sbs.naic.org](http://sbs.naic.org) and [sbs-beta.naic.org](http://sbs-beta.naic.org), in the Site field. It is necessary to use these exact urls. Click the Add button.



### 10 SBS pop-ups and redirects allowed

Below the Settings site is shown as it appears after the SBS urls have been added as an exception to allow pop-ups and redirects.



➔ [SBSHELP@NAIC.ORG](mailto:SBSHELP@NAIC.ORG) • 816-783-8990